

MONTHLY MEMBERSHIP PROGRESS REPORT

District 120

Results as of: 5/31/2026

GMT:

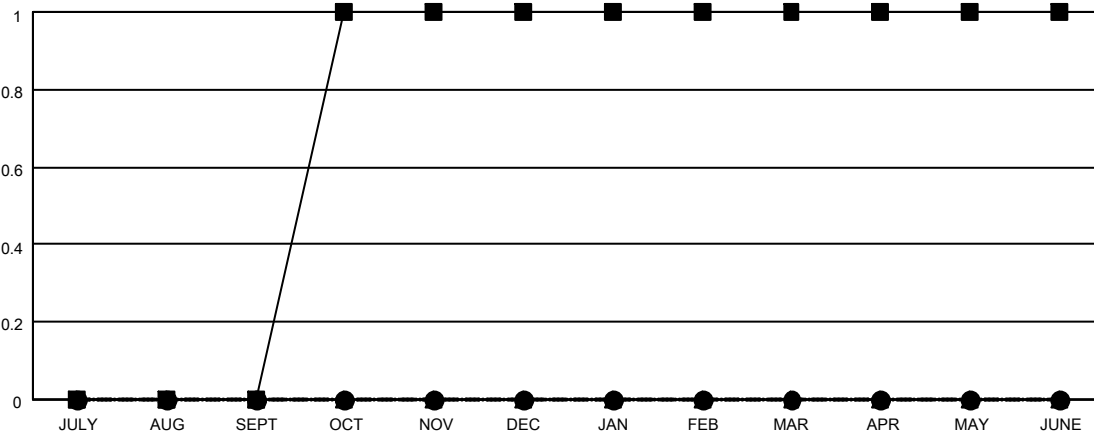
LOCATION ESTONIA

GMT CA

Clubs			
RESULTS FOR 2025-2026			
QUARTER	NEW CLUB GOAL	NEW CLUBS	DROPPED CLUBS
JULY/AUG/SEPT	0	0	2
OCT/NOV/DEC	1	0	0
JAN/FEB/MAR	0	0	0
APR/MAY/JUNE	0	0	0

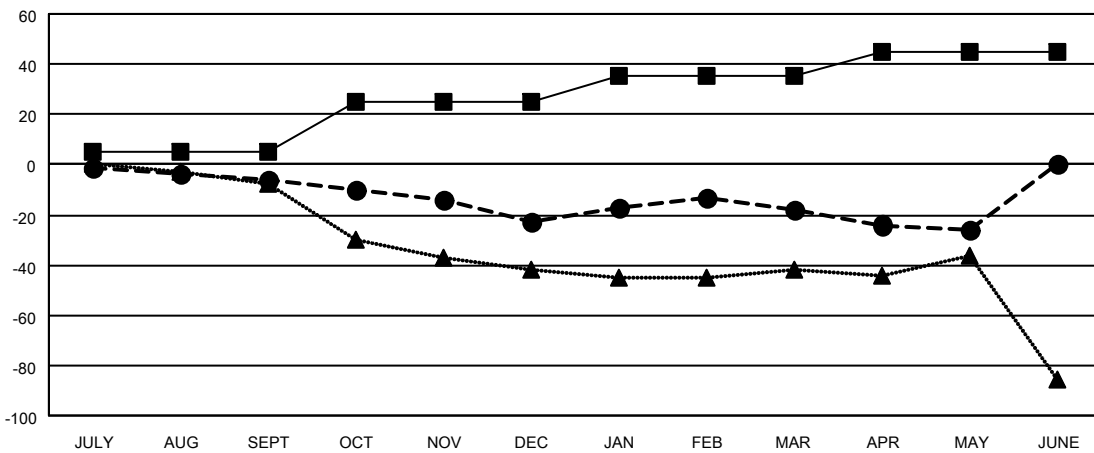
Members			
RESULTS FOR 2025-2026			
QUARTER	MEMBER GROWTH NET GOAL	MEMBER GROWTH ACTUAL	DROPPED MEMBERS ACTUAL (including transfers)
JULY/AUG/SEPT	5	11	13
OCT/NOV/DEC	20	13	22
JAN/FEB/MAR	10	21	15
APR/MAY/JUNE	10	2	9

GOALS AND ACTUAL NEW CLUBS CUMULATIVE



- - CURRENT YEAR GOALS FOR NEW CLUBS
- - CURRENT YEAR ACTUAL NEW CLUBS
- ▲ - LAST YEAR ACTUAL NEW CLUBS

GOALS AND ACTUAL MEMBERS CUMULATIVE



- - MEMBER GROWTH NET GOAL
- - MEMBER GROWTH ACTUAL
- ▲ - LAST YEAR MEMBERSHIP ACTUAL

DROPPED CLUBS: 2	21 CLUBS OF 57 ADDED 1 OR MORE NEW MEMBERS	GENDER DISTRIBUTION MALE 634 (63.21%) FEMALE 370 (36.89%)
DROPPED MEMBERS DECEASED 0 CLUB CANCELLED 0 OTHER 59 TOTAL 59	CLICK HERE FOR CUMULATIVE MEMBERSHIP DATA	TOTAL FAMILY UNIT MEMBERS 58 FAMILY MEMBERS PAYING HALF DUES 30